



A :
 Telefono :

Data : 06.09.2005
 Fax n. :

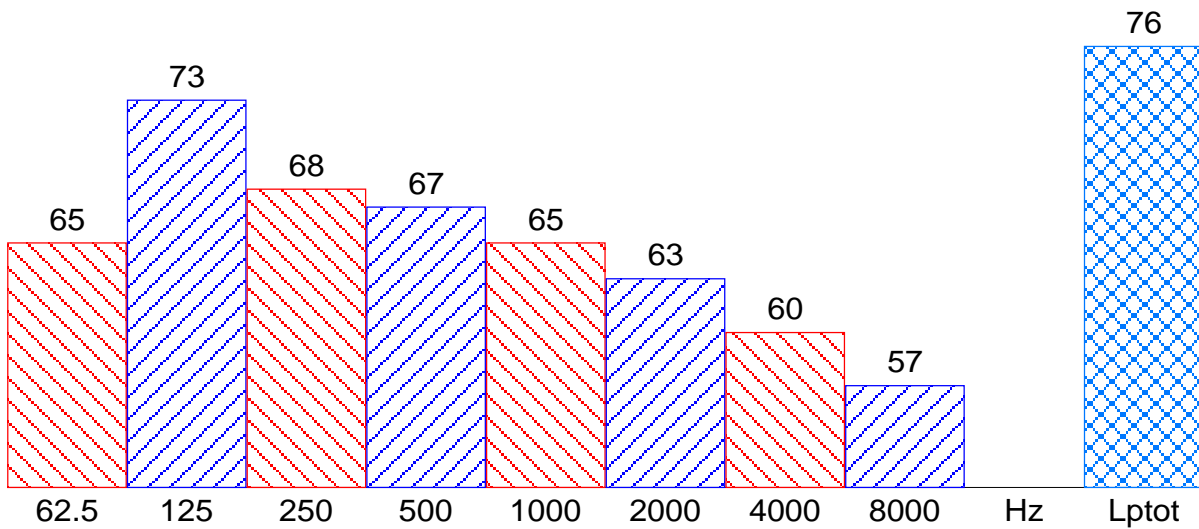
HWN/1250/10-330/15°

Densità : 1.225 [kg/m³]
 Diametro : 1250 [mm]
 Tipo pala : HWN
 Pale-mozzo : 10-330

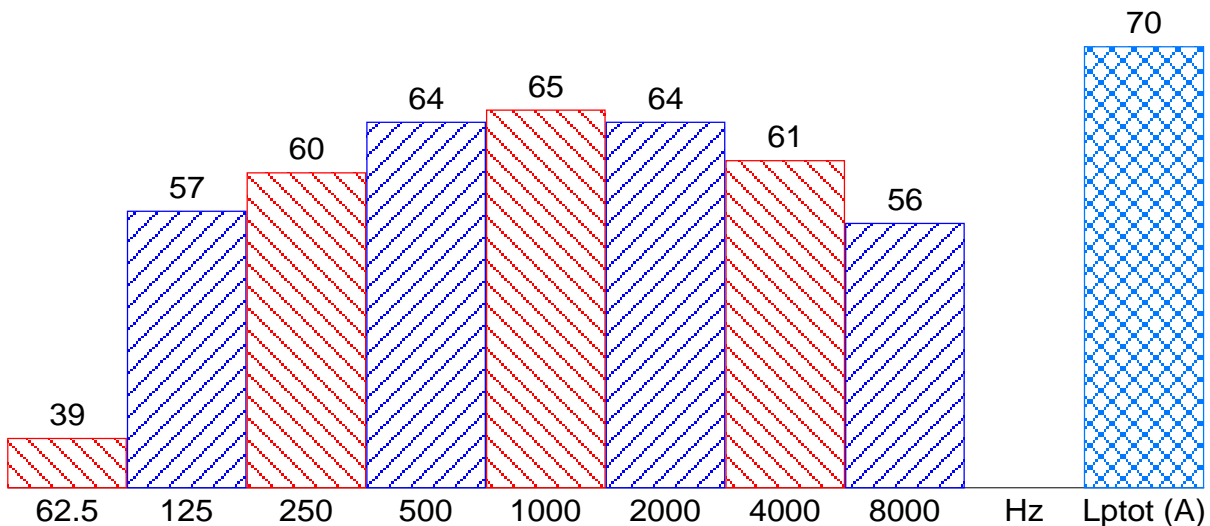
GAP : 0.5 [%]

Temperatura : 15.0 [°C]
 Rotazione : 710 [RPM]
 Materiale : NV
 Angolo : 15°

Lp - PRESSIONE SONORA in [dB]



LpA - PRESSIONE SONORA in [dB(A)]



Q = 23792.2 [m³/h] Hst = 35.6654 [Pa] Nass = 837.935 [W] Eff = 41.86 [%]
 Distanza di riferimento pressione sonora = 1 [m]